

**SHOWCASING
YOUR VISION**



CLICK
NETHERFIELD
SHOWCASING YOUR VISION





BY APPOINTMENT TO
HER MAJESTY THE QUEEN
DISPLAY CASE SUPPLIERS
CLICK NETHERFIELD LTD
LIVINGSTON

SHOWCASING YOUR VISION

**WELCOME TO CLICK NETHERFIELD,
WE ARE MUSEUM SHOWCASE EXPERTS
WITH OVER 50 YEARS' EXPERIENCE
WORKING FOR ROYAL FAMILIES,
WORLD LEADERS, NATIONAL
INSTITUTIONS, ARTISTS AND
PRIVATE COLLECTORS.**

We are extraordinarily pleased to share with you a brief selection of recent and iconic Click Netherfield projects. These projects demonstrate our collaborative approach, in-house manufacturing prowess and ability to offer innovative, creative solutions in response to the challenges set by the world's leading architects and designers.

From our humble beginnings in the late 1960's to our position today, as a global leader in the museum industry, we thank you for considering us for your project.

Our showcase experts can be relied upon at all stages of a project, from initial consultancy, cost estimates, design development, prototyping through to manufacture, quality control, logistics, installation, commissioning, training and Click After Sales ongoing support.

Proud holders of the Royal Warrant since 2010, Institutions from around the world recognise our impeccable conservation credentials and trust our showcases to protect their cultural treasures.

**WE ARE CLICK NETHERFIELD.
LET US SHOWCASE YOUR VISION.**

CONTENTS

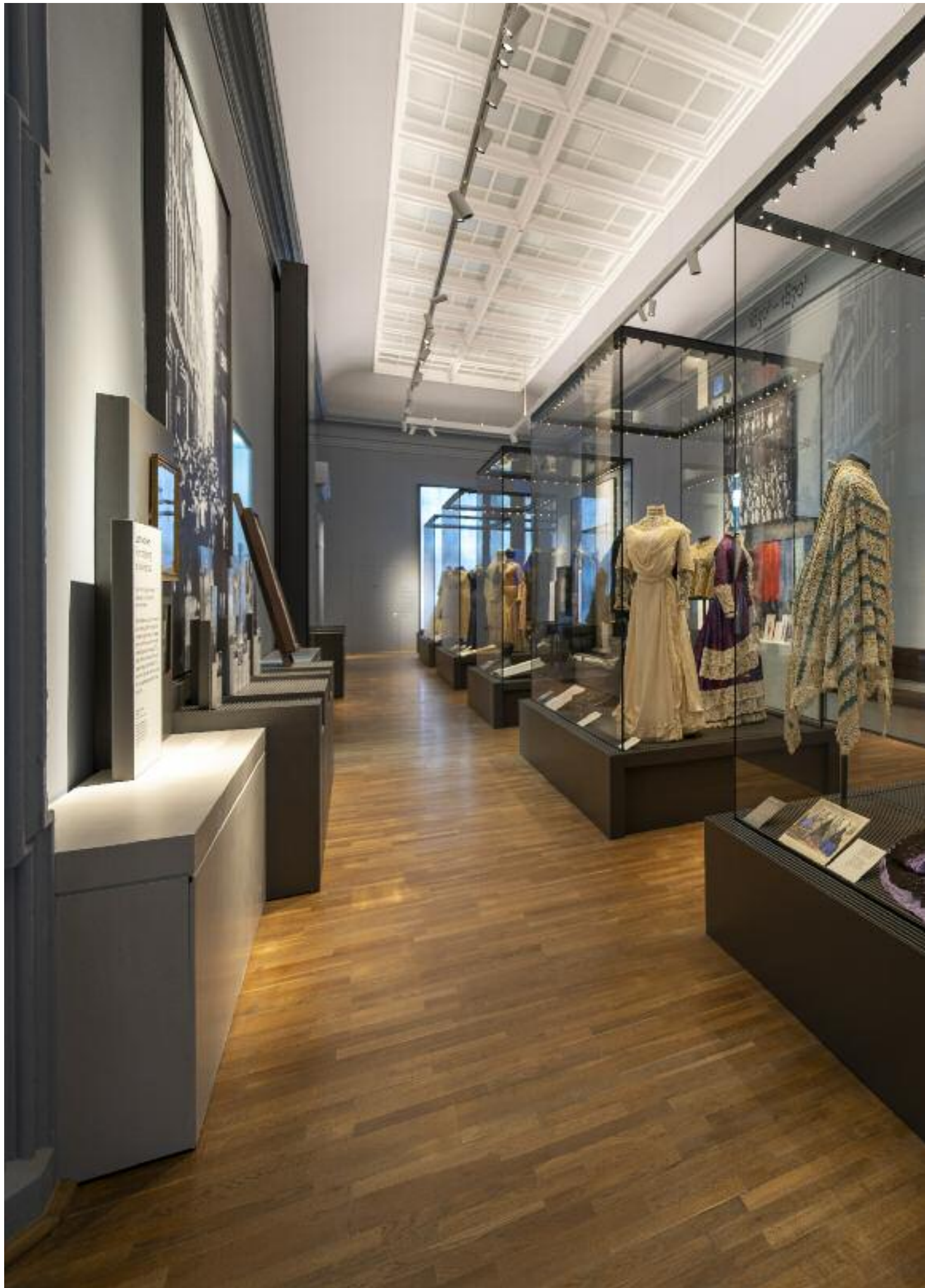
- 03 Showcasing Your Vision
- 11 About Us
- 12 Manufacturing Excellence
- 15 Project Management
- 16 Conservation & Security
- 19 Design Engineering
- 20 Solutions Innovation
- 22 End To End Services

ACKNOWLEDGEMENTS

Click Netherfield would like to thank the following people and organisations for very kindly providing their photographs for use in this brochure.

Museum of Islamic Art	Photo Credit: ZED Photography
Al Salam Palace	Photo Credit: Studio MB
Nottingham Castle	Photo Credit: Casson Mann Design
First Americans Museum	Photo Credit: Ryan Linton, FAM
Science Museum Wellcome Galleries	Photo Credit: Science Museum Group
Arctic Studies Center	Photo Credit: David Copeman & Kubik Maltbie
Oman National Museum	Photo Credit: Niccolo Guasti
AMNH Hall of Gems & Minerals	Photo Credit: Denis Finnin, AMNH
Kansas City Museum	Photo Credit: Gallagher & Associates
Art Gallery of Ontario	Photo Credit: Thomson Collection & AGO
Imperial War Museum, Holocaust Galleries	Photo Credit: Casson Mann Design
Eiteljorg Museum	Photo Credit: Origin Studios
NMAL: Molina Family Latino Gallery	Photo Credit: ©Tony Powell





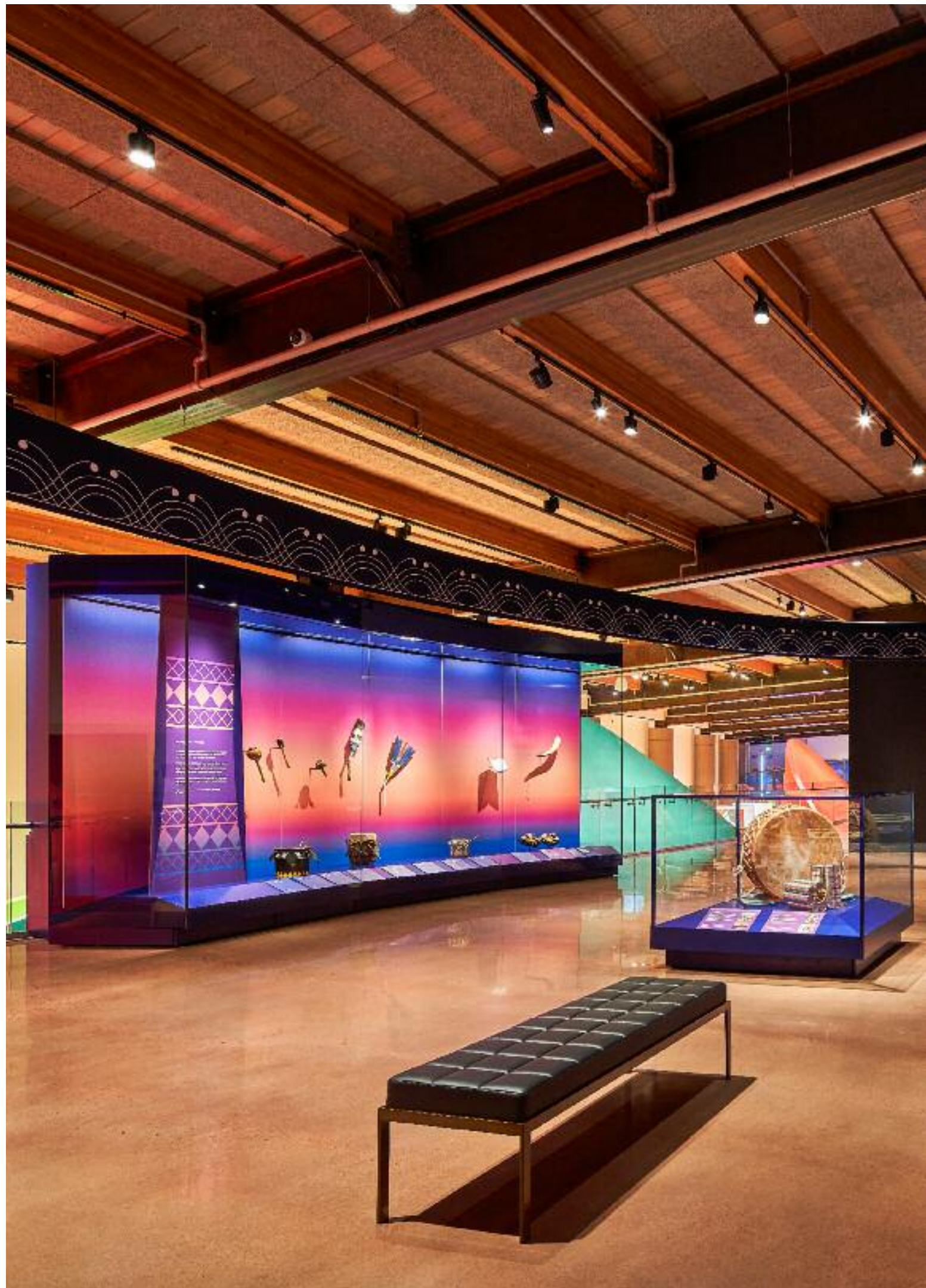


The Lace Market
Heart of a global industry

By the 1850s, Nottingham had become a major centre for the lace industry. The city's lace makers were producing a wide range of lace, from simple cotton to intricate silk and gold lace. The industry was a major source of employment for the city, and its products were sold in markets around the world.

The city's lace industry was a major source of employment for the city, and its products were sold in markets around the world.

Nottingham Castle





EXPLORING MEDICINE

The use of pig gallbladders allowed
the Chinese to create the first
antibiotic, known as penicillin.
The discovery of penicillin was made
in 1928 by Alexander Fleming, a
Scottish biologist, while he was
working in St. Mary's Hospital in
London. He discovered the
antibiotic while studying the
growth of bacteria on a petri dish.

Penicillin was the first antibiotic
discovered and it led to the
development of many other
antibiotics. It was used to
treat the wounds of World War
I soldiers and it has saved
millions of lives since then.



ABOUT US

EXCELLENCE, PASSION, CREATIVITY, INNOVATION, SERVICE & SOLUTIONS.

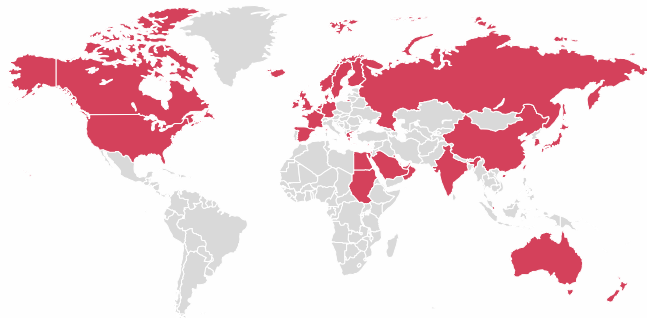
At the heart of every showcase, and indeed part of everything we do, are the six pillars of Click Netherfield.

The following sections and all of the examples of our work enclosed within this document speak to how Click Netherfield is differentiated from any competition. At the very foundation of the company and at every phase of our projects, we take a comprehensive view whilst ensuring we maintain focus and deliver on our project pillars for our clients, their heritage and their vision.

- **MANUFACTURING EXCELLENCE**
- **PROJECT MANAGEMENT**
- **CONSERVATION & SECURITY**
- **DESIGN ENGINEERING**
- **TECHNOLOGY INNOVATION**
- **END TO END SERVICES**

TRULY GLOBAL EXPERTISE

With offices on both sides of the Atlantic, partners across the globe, and installations from Alaska to New Zealand, from a single showcase to complete National Museums, our innovative solutions and legendary client services are a perfect fit for any showcase project, anywhere in the world.





MANUFACTURING EXCELLENCE

IN-HOUSE MANUFACTURING, ENSURING TOTAL QUALITY CONTROL AND GUARANTEED PERFORMANCE.

At the heart of Click Netherfield's business is our advanced manufacturing facility in Livingston, Scotland, where our highly skilled technicians work to manufacture our world-leading museum showcase solutions.

Every showcase built in our factory meets – and very often exceeds – all the conservation and quality standards that you would expect.

Every one of our showcases is factory assembled, even if in sections due to size, which ensures not only total quality control, but speeds up our site installation times.

When global supply chain issues cause havoc to many of our competitors, our processes being under one roof provide our clients with a stability and assurance that is essential when managing world class museum projects, both large & small.

Glass is the heart of a museum showcase and Click Netherfield has invested heavily in the right equipment to allow us to control the quality of this critical element.

We have an unrivalled range of in-house capabilities and a unique part of the Click Netherfield experience that delights our clients is to visit and see their cases actually being manufactured in front of their eyes, including these areas of expertise.

We welcome you to enquire about a Factory Tour, we absolutely love hosting clients and partners.

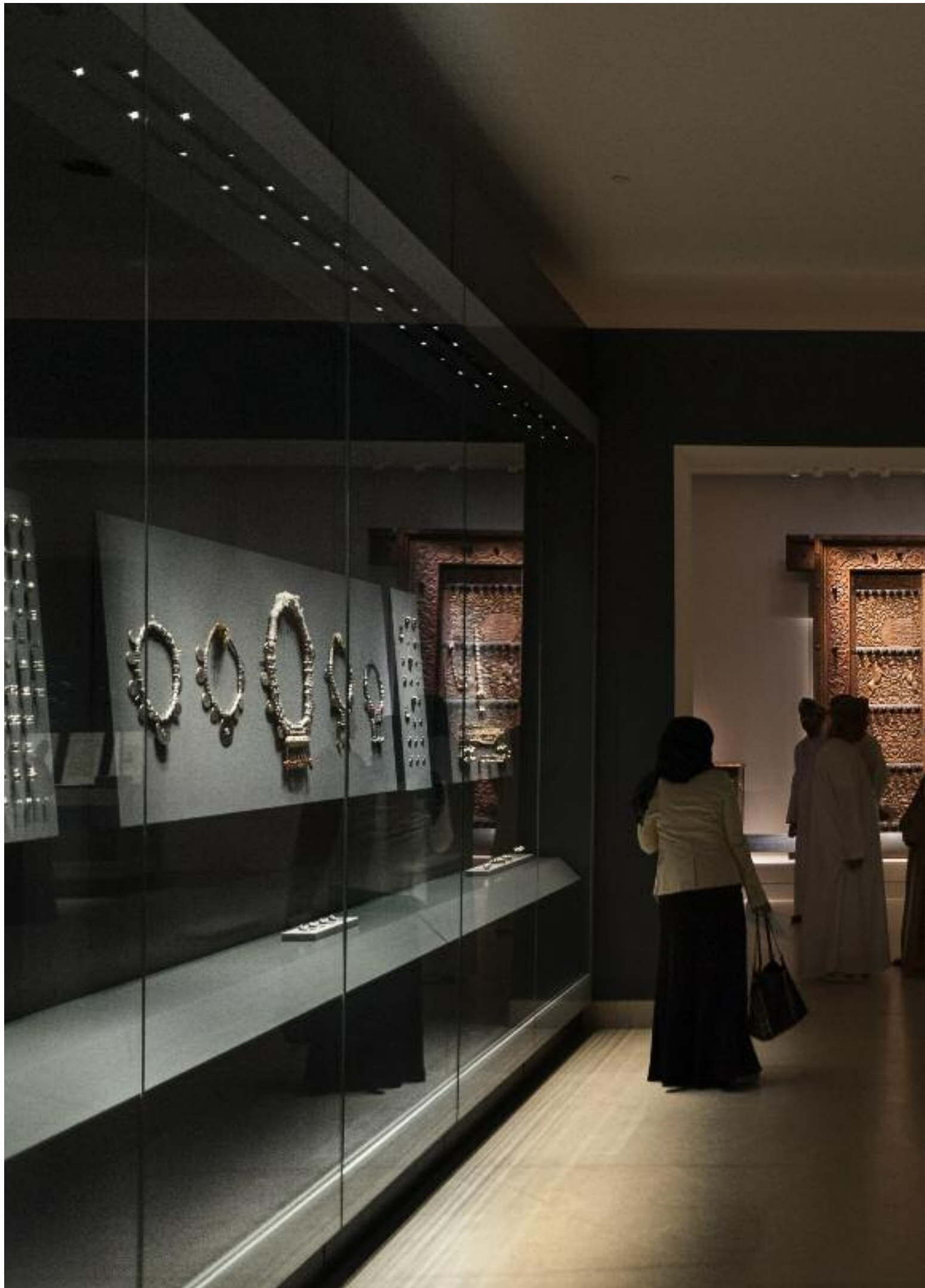
- Glass processing to the highest tolerances on specialised materials such as anti-reflective low-iron anti-bandit glass.
- Precision engineering for making items such as our proprietary dual action hinges.
- Sheetmetal work – punching, forming and welding for case structural elements.
- Powder-coating of metalwork for a high-quality inert coatings in a variety of finishes.
- CNC machining and fabrication of solid surface materials.
- Spray painting of internal panels and plinths.
- High resolution direct substrate ink jet printing.
- Fabric wrapping of dress panels and mounts.
- Structural silicone or UV bonding of glass.
- Final assembly, inspection, crating and despatch.
- Because we fully create our cases in a 3D virtual CAD environment, what you see and approve can be fed directly into our CNC machines operated by our skilled CAD/CAM experts so your cases are exactly what you were expecting.

> *Arctic Studies Center,
Anchorage Museum*

EASTERN SIBERIAN

...in shoot this arrow up
...but how far it will go
...the future
...what we were here for
...generations need to know
...stories"







PROJECT MANAGEMENT

OUR PROJECT MANAGERS WORK WITH YOU TO ENSURE SUCCESS.

Each and every project we work on is managed from start to finish by our experienced in-house Project Management Team. Our Project Managers are there to oversee every aspect of a project and will be the main point of contact throughout for all our clients.

Click Netherfield's Project Management Methodology is structured, but offers flexibility and can be tailored to suit every project.

Our dedicated team also complete H&S Planning and risk tables to ensure all eventualities are considered and action plans implemented.

Tailored documents are used as part of our project control and management approach for all projects; these help ensure the smooth running of each project and provide necessary progress reporting.

Most importantly, we firmly believe in face to face dialogue on the most critical parts of the job. Therefore upon appointment, we arrange first familiarisation, design and engineering workshops with all key members of the project team. Due to our previous experience in the industry, and having provided many similar projects, we confidently provide quick and effective solutions agreed by all parties.

Your Project Manager will remain the consistent contact throughout the life-cycle of the project, and will draw upon our subject matter experts for object display, lighting, conservation, engineering, logistics or any other specific area of focus, whilst maintaining the project budget and ensuring the programme is achieved - whilst making certain the client experience meets the same world-class standards for which our showcase solutions are widely held.



CONSERVATION & SECURITY

FROM INERT MATERIALS TO LOW OXYGEN ENVIRONMENTS; CONSERVATION IS AT THE HEART OF OUR SHOWCASE DESIGNS.

A well-sealed showcase is recognised as the best way to protect objects on display and this characteristic of a case can be defined and quantified by its Air Exchange Rate (AER).

As part of our conservation testing & assurance, our quality management team now regularly carry out Ultrasonic and CO₂ air exchange testing of cases at final assembly stage in our factory and on-site as part of our formal handover procedures. The need for inert case materials is well known to museums because with exhibits sometimes sealed within cases for many years, it is important that the case materials do not emit pollutants that can react with and damage exhibits on display. We continually work with major institutions such as the British Museum and the Material Working Group of the AIC to identify and test a range of materials including adhesives, seals, fabrics and sheet materials, before they are approved for permanent use within cases. Project-specific testing is carried out upon request.

There are certain objects that require exceptional environments. These can include nation-defining documents, mummies or especially fragile objects. Environmental systems are specifically designed for these unique exhibits and can include temperature and humidity control, the reduction of oxygen levels through nitrogen generation and the sterilisation of bacteria and the filtration of pollutants.

Our conservation team participates in the commercial & tendering process, and follow straight through the project life-cycle to ensure compliance throughout, often consulting with the client team in weekly meetings, analysing special display or object mounting requirements and ensuring curatorial objectives are met throughout. At every step, object safety and collections care is the single driving force behind everything we do.



Large Geode
This geode is filled with small, glowing purple crystals. The crystals are made of a synthetic material that glows under UV light. The geode is a popular exhibit in the museum's geology section.

Geology
The geology section of the museum features a variety of exhibits, including fossils, minerals, and rocks. The exhibits are designed to educate visitors about the Earth's history and the processes that shape our planet.

Marine Life
The marine life section of the museum features a variety of exhibits, including coral, shells, and other sea creatures. The exhibits are designed to educate visitors about the diversity of life in the ocean and the importance of marine conservation.



**THE THOMSON COLLECTION
OF SHIP MODELS**

The Thomson Collection of Ship Models is a unique and comprehensive collection of miniature replicas of the world's most famous ships. The collection includes models of sailing ships, steamships, and modern vessels, all meticulously crafted to scale. The models are displayed in a curved glass case, allowing visitors to view them from multiple angles. The collection is a testament to the artistry and engineering of the maritime world.

**THE COLLECTION OF
THOMSON DE MALLERIE
OF BOSTON**

The collection of Thomson de Mallerie of Boston is a remarkable assemblage of ship models, including the USS Constitution and the USS Intrepid. The models are displayed in a curved glass case, allowing visitors to view them from multiple angles. The collection is a testament to the artistry and engineering of the maritime world.



DESIGN ENGINEERING

SHOWCASE DESIGN.

Each solution offered must be at its foundation, totally functional, with a great deal of thought given to the end-user who will operate each showcase.

Engineering Design is fundamental to our business. As part of our design ethos, our expert teams are able to engineer solutions that provide the highest level of performance. Our resources include a talented and innovative design engineering team who all work inhouse at our office in Scotland. We have worked with many world-class architects and exhibition design teams from across the globe whose vision has been enhanced and made reality with the help of our team of highlytrained Design Engineers.

Working mainly in Inventor, and offering cloud-based access to 3D models to clients, designers and building partners across our projects, our showcase solutions are able to be viewed & shared in a collaborative process. In taking input from BIM models, 3D building scans and architectural & design models such as

Sketch Up, we aim to deliver a seamless design integration of showcases within the project.

We fully understand that in order to realise the potential of an innovative design scheme, there is a need to create a physical realisation through sampling, mock-ups and prototypes. Once this is achieved, regular reviews with the full team are held as showcase drawings are rolled out.

A modern museum showcase is a sophisticated set of systems brought together seamlessly to protect objects. Whether it is the sealing of the case, the environmental controls, the lighting, the opening systems, or presentation of the objects, it is critical that these systems are rigorously tested. For every project we check structural integrity and performance using Finite Element Analysis (FEA).

We welcome you to inquire about a Design Engineering demo, as you consider our services.



SOLUTIONS INNOVATION

TECHNOLOGY, INNOVATION AND OUR SUCCESS.

For more than 50 years Click Netherfield has grown a reputation for innovation and engineering excellence. This is harnessed through the use of technology which helps us to tailor our showcases in line with the changing demands of our customers.

Whether it be tablet-based control systems for increasingly large showcases, wireless controls for lighting, motorised door systems, or OLED & smart-glass applications, our team has met every challenge for our projects around the globe.

Likewise, some projects demand more advanced display environments and for these we produce ultra-sealed cases, protecting the most treasured cultural artefacts.

Our advanced environmental climate showcases can be produced with a number of options including humidity and temperature control, anoxic nitrogen systems and pollutant filtration. We have partnered with leading ionic transfer membrane firms

in developing truly next level, maintenance-free & totally stable display environments and look forward to facing the challenges tomorrow might bring!

In addition to showcase technology applications, our in-house solutions innovation team have developed proprietary project management & commercial systems which our team relies on throughout the life-cycle of the projects.

Our Click Configurable brand, available to credentialed clients, is our robust and on-demand tool for our commercial, project management and design engineering departments to generate live Inventor models through a cloud-based configuration tool, which our team has built in-house.

The future is extraordinarily bright thanks to our talented in-house team of software and technology experts; we welcome you to inquire about a live demo of our systems.

> *Imperial War Museum,
Holocaust Galleries*



Είσατος ομιλία Α
1945-1946
Κορνήλιος Καστοριάδης

Είσατος ομιλία Β
1946-1947
Κωνσταντίνος Αρσένος

Είσατος ομιλία Γ
1947-1948
Κωνσταντίνος Β. Β. Β. Β. Β.

Είσατος ομιλία Δ
1948-1949
Κωνσταντίνος Π. Π. Π. Π. Π.



END TO END SERVICES

PRE-CONSTRUCTION, PLANNING, LOGISTICS, INSTALLATION, CLICK AFTER SALES.

Highly regarded and recognised world-wide for our outstanding services, the Client Experience is a main focus of all that we do at Click Netherfield.

Just as we have grown a reputation for reliability, and trustworthiness in our showcase solutions, the proactive service-orientated approach from concept to completion is a differentiating pillar of our company.

Often called in for pre-construction consultancy, or master-planning services, our experts carefully guide our clients in the early stages of projects.

During active projects, our services continue in providing guidance and advice to consultants and stakeholders alike, often saving valuable time and budget for our clients.

Industry-leading logistics & installation services are also a hallmark of our project solutions. There is no guesswork, with live tracking, daily progress updates and constant communications across the team.

And it doesn't stop there; we are well-known for our multi-decades long relationships and offer formal service contracts and post-project services as part of Click After Sales.

Our services are end to end.

We welcome you to get in touch. Come see firsthand what the Click Netherfield experience really means. Come meet the people, of Click Netherfield.





THE BRITISH SHOWCASE GROUP GLOBAL MUSEUM EXPERTS



CLICK NETHERFIELD SHOWCASING YOUR VISION

At Click Netherfield our bespoke showcases are expertly designed to meet every client requirement and are manufactured to a world-class standard. Engineering Design is the core of our business and our expert teams are able to engineer cutting edge solutions that provide the highest level of performance.



CLICK CONFIGURABLE CUSTOMISE OUR RANGE

The Click Configurable approach makes the design, specification and purchase of high quality museum showcases much easier. One of our specialists will go through your project with you in detail providing advice and support to customise cases from our own design range to your exact requirement.



TESS DEMOUNTABLE SUSTAINABLE SHOWCASES

TESS Demountable is a range of demountable modular museum showcases with the same levels of security, aesthetics and performance characteristics as permanent gallery cases. These can be assembled, dismantled, relocated and even reconfigured – by you, the end user or with our support.



VAULT SHOWCASES HIGH SECURITY SOLUTIONS

The VAULT showcase system has one of the highest security ratings in the world and it is designed, manufactured and tested to LPS 1175.



CLICK AFTER SALES MAINTAINING YOUR VISION

Click Aftersales provides continuing service focusing on maintenance, relocation, reconfiguration, and refurbishment and spares to ensure your showcases stay in the best condition possible.



BY APPOINTMENT TO
HER MAJESTY THE QUEEN
DISPLAY CASE SUPPLIERS
CLICK NETHERFIELD LTD
LIVINGSTON



CLICK NETHERFIELD

SHOWCASING YOUR VISION

Head Office

The Glassworks
Grange Road
Houstoun Industrial Estate
Livingston EH54 5DE
United Kingdom

+44 (0) 1506 835 200
showcases@clicknetherfield.com

USA

Click Netherfield Inc.
1103 Laurel Oak Road
Suite 107
Voorhees, NJ 08043
United States of America

+1 (856) 366 2510
Toll Free 1 (888) 426 9572
r.skorch@clicknetherfield.com

www.clicknetherfield.com

PART OF THE BRITISH SHOWCASE GROUP